

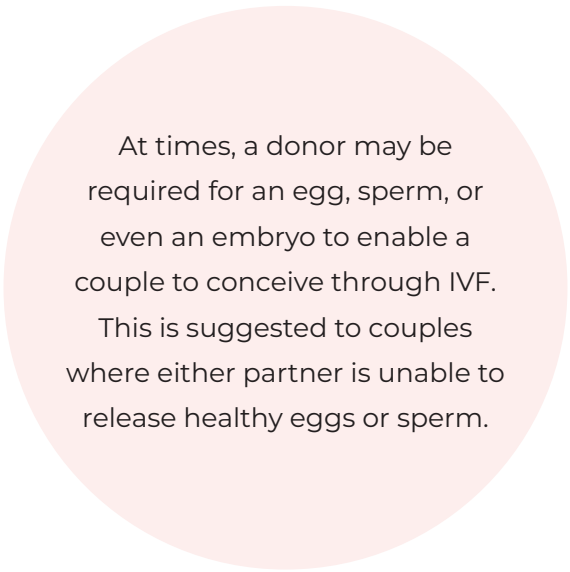


9M
FERTILITY
by ankura hospital



DONOR TREATMENT





At times, a donor may be required for an egg, sperm, or even an embryo to enable a couple to conceive through IVF.

This is suggested to couples where either partner is unable to release healthy eggs or sperm.

What is Donor Egg IVF?

This is when eggs are used from a different woman, rather than the one in whose uterus eggs are transplanted. The eggs are fertilised from the sperm of the male partner and transplanted into the uterus of the recipient, as in the regular IVF cycle.

When are Donor Eggs needed?

Donor eggs are required when the woman who wishes to conceive is unable to use her eggs/ova, due to reasons which include & are not limited to:

- Ovarian failure
- Advanced maternal age
- Known congenital disease in the mother-to-be
- Women who have undergone cancer therapy and could not preserve their eggs
- Women who have experienced repeated IVF failures in the past

Who are egg donors?

Your doctor and your hospital will help you find an egg donor. Egg donors are healthy, fertile women between the ages of 23 to 35. The suitability of a woman donating eggs is thoroughly tested before selecting her for donating. Detailed physical and medical examination followed by blood tests is done. Compatibility testing is also performed before finalizing the donor.

What is the process of egg donation?

Just as in regular cases, donor women also undergo a similar process for egg retrieval. They are prescribed medications from a few weeks in advance which stimulate their eggs, the doctor confirms the same through ultrasounds and schedules an appointment for retrieving eggs. During this appointment, a transvaginal probe with an additional attachment is used to aspirate the eggs out of the ovary.

What happens after egg donation?

Except for getting donor eggs rest of the procedure remains the same as in IVF.

After successful egg donation, the eggs may be fertilised immediately and transferred to the womb for completing the IVF procedure, or else the eggs can be preserved. In case of using fresh eggs, your menstrual cycle is synched with the donor cycle to assure that your endometrium is ready to receive the embryo at the time of egg retrieval.

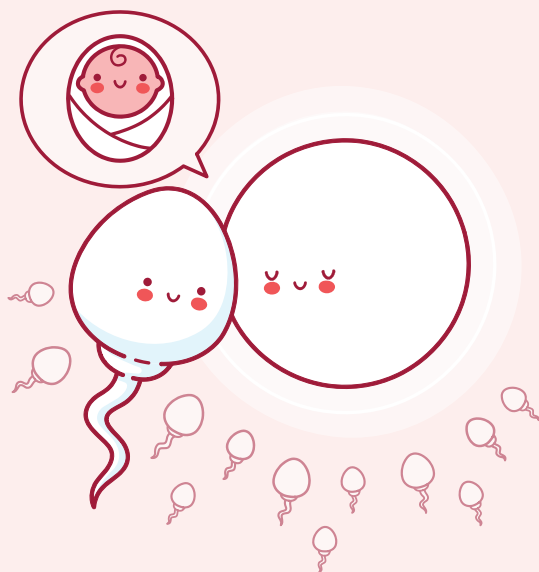
When is sperm donation needed?

A couple may need a sperm donor when:

- The male partner has azoospermia and sperms cannot be obtained through TESA/M TESE procedures
- Quality of sperms in male partner is poor
- Known genetic disease in the male partner
- Repeated IVF failures due to issues with sperms

What is the process of sperm donation?

Sperm donors undergo detailed history taking, laboratory testing (screening of semen for infections, STDs, etc), and genetic screening (karyotyping). They are kept stored in a sperm bank and tested for crucial infections such as HIV, HbsAg, etc, again after six months and then used for fertilisation.



How can donor sperm be used?

Donor sperm can be inseminated directly into the womb utilising intrauterine insemination procedure (IUI) which can result in fertilisation. Alternatively, they can also be used for IVF, in this case, eggs are retrieved and fertilised using donor sperm in the laboratory.

What is Embryo donation?

In case both male and female partners have infertility, both eggs, and sperm can be used from a donor, and fertilised through IVF. The embryo thus formed is implanted into the womb. This can also be helpful in cases with a history of genetic disorders, or repeated IVF failure.

All cases of infertility are unique, and the success rate and risks associated with a procedure depend on the individual health condition.

Ankura hospital for women and children has a team of expert obstetricians and gynaecologists who guide you through each step of infertility treatment.





For Any Query:
9053 108 108



Hyderabad | Pune | Bhubaneswar | Khammam



Scan to reach us

www.ankurahospitals.com | www.9mfertility.com

This is general information issued in the public interest. Please contact your doctor for more details.